

UNIVERSITY OF THE  
WITWATERSRAND,  
JOHANNESBURG



100 <sup>1922</sup> <sub>2022</sub>

# Leaving a Legacy

**A bequest to Wits is a gift of higher  
education for future generations**

.....

You can help change the world



WITS  
UNIVERSITY

100 <sup>1922</sup> <sub>2022</sub>



WITS  
UNIVERSITY

100 <sup>1922</sup> <sub>2022</sub>

2022 Sees us celebrating the success and achievements of our graduates and *100 years* of changing lives for the *better* across the globe.

We are using this milestone celebration to further our impact on the country, continent and the world. Wits has shaped our city and our nation; Wits has made history; and now with your support Wits can create the future.

In celebration of our 100<sup>th</sup> birthday, we turn to our community and beyond, to ask for the support that will enable us to realise our vision. **Our centenary campaign, Wits 100, aims to raise R3bn to further our work.**

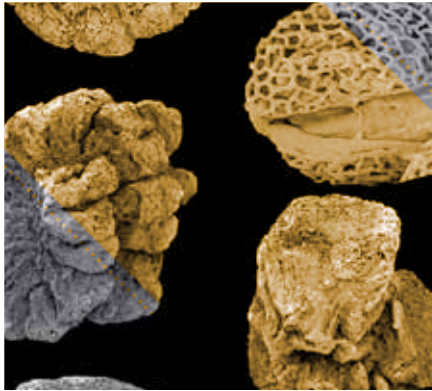
The Wits Endowment Fund will secure the sustainability, independence and impact of the University in perpetuity and will support the University's three core activities: **student support, research excellence and capital investment.**

Would you like to give Wits a gift, but first want to ensure that you and your loved ones are financially cared for? A planned gift in your will could be the answer.

**Bequests are crucial in contributing to the growth of Wits.** A bequest enables the University to maintain and enhance its position as a leading University in South Africa, in Africa, and in the world by sustaining globally competitive standards of excellence in learning, teaching and research.

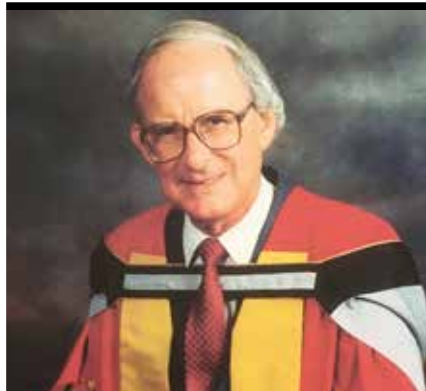
Should you wish to leave a bequest to Wits in your will, we recommend that you contact an attorney, financial advisor or estate planner for advice. We invite you to join this illustrious group of alumni and consider leaving a bequest to Wits.





**An anonymous R10 million bequest for the Palaeosciences:**

In 2022 Palaeontologists at Wits benefitted from an anonymous R10 million bequest, which gave them the x-ray vision they needed to “see” into solid rock, without destroying the fossil or the sedimentary material in which it is embedded. The R10 million was used to renew the University’s Micro CT scanner, which enables scientists to scan a fossil-bearing rock sample using 3D imaging, to examine a fossil without having to painstakingly physically remove the fossil from the rock. It uses 3D x-rays to scan inside an object, bit by bit, without having to break it open.



**Professor Mervyn Shear’s** bequest to Wits reflects his intellectual interests and his moral passions during his years at Wits. He was a leader in the establishment of oral pathology as a discrete academic discipline, both in South Africa and internationally. The Mervyn Shear Award in Oral Pathology honours his contribution to teaching and research in this field. The bequest to establish the Caryll & Mervyn Shear Memorial Scholarship reflected Professor Shear’s role as a senior academic administrator in the 1980s. It was his wish that support should be available to today’s student leaders who want to continue their studies and hone their skills to contribute to the public life of the country in the future.



**Dr Harry Broekman** personified the human spirit. It was his dream as a young boy to become a doctor, but he soon found out that it was not that easy. In pursuit of his dream, he repeated his matric three times to achieve a first-class matric to get into Wits. His next hurdle was money, which his parents did not have, and he worked for several years as a bank teller to save for his studies. He finally got into Wits and graduated with his medical degree in 1969. He registered as a medical doctor the following year and worked at Coronation and South Rand Hospitals. Dr Broekman sadly passed away on 4 July 2013. He left R7 million to the Faculty of Health Sciences so that a young person with a burning desire to enter the medical field, who do not have the means to do so, can be helped to fulfill their dream.



**David Hugh Hamilton Skinner** was a proud Witsie – he was honoured and so grateful to have the opportunity to have studied at what he considered to be one of the finest university engineering faculties in the world. He first enrolled at Wits in 1936 but abandoned his studies after six months due to acute financial difficulties in his family. In 1941, after securing a scholarship from a generous benefactor, he was able to return to Wits

to fulfill his dream of obtaining his undergraduate qualification. He completed his engineering studies in the minimum four years, achieving cum laude upon graduation.

Throughout his long and successful career as a professional Civil Engineer, and during his retirement years, he always made a point of displaying his Wits University qualification certificate alongside the mounted crest of the University on his office and study wall. His Wits University blazer hung proudly in his clothes cupboard until the day he died. (Everyone who studied and represented the University at any official function in the 1930's worked hard to secure the funds to purchase a blazer).

He made a point, in every known revision of his Last Will and Testament that he drafted during his lifetime, to include the University of Witwatersrand Foundation at the very top of his list of bequests, and always ensured that it was the bequest with the highest monetary value listed in his will. This was a testament to the huge impact that studying at Wits made on him as a young man, and on the career that he subsequently forged during his lifetime.

## It is never too early to start thinking about a *charitable gift* in you will.

There are different ways of making such a gift:

### **PECUNIARY BEQUEST**

*A fixed sum of money or shares*

### **RESIDUARY BEQUEST**

*All or a percentage of your estate after all other bequests have been made*

### **SPECIFIC BEQUEST**

*An item\* such as a valuable book, artwork or archive of documents*

Whatever you choose to leave and whatever the value, your gift will make a difference to the lives of many future Witsies.

Please make the Wits Development and Fundraising Office aware of your intentions and keep us informed should they change at any time.

For further information with regard to making a bequest please contact:

### **JUSTINE DANGOR**

*The Development Fundraising Office*

University of the Witwatersrand, Johannesburg, South Africa

**TEL:** +27 11 717 9713

**E-MAIL:** justine.dangor@wits.ac.za

*\*if you are considering gifting an item, please contact us to ensure that Wits can provide a suitable home*